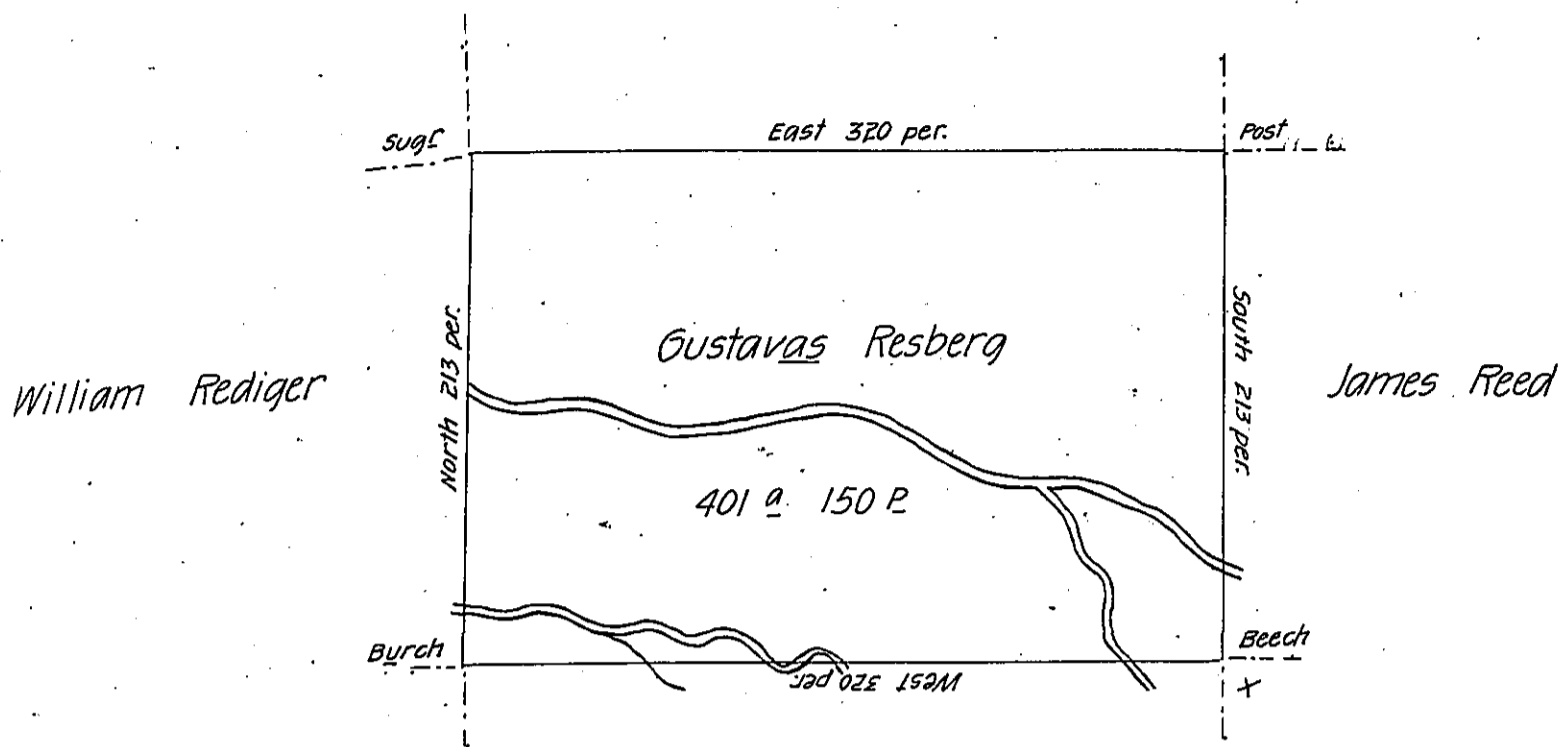


Elizb<sup>h</sup> Robertdew



John Rily

Situate on the west side of French Creek Alleghiny County  
 Containing 401 acres 150 perches & allowance of six p. cent. for  
 roads &c Surveyd the 15<sup>th</sup> day of May 1795 in pursuance of  
 a warrant dated the 30<sup>th</sup> day of May 1792.

W<sup>m</sup> Power DY. S<sup>r</sup>

To Dan<sup>l</sup> Brodhead Esq<sup>r</sup>  
 Surveyor General.

IN TESTIMONY that the above is a copy of the original remaining on file in  
 the Department of Internal Affairs of Pennsylvania, made  
 conformably to an Act of Assembly approved the 16th day of  
 February, 1833; I have hereunto set my Hand and caused  
 the Seal of said Department to be affixed at Harrisburg,  
 this fourteenth day of August 1906.

*Laac R. Brown*  
 Secretary of Internal Affairs.